

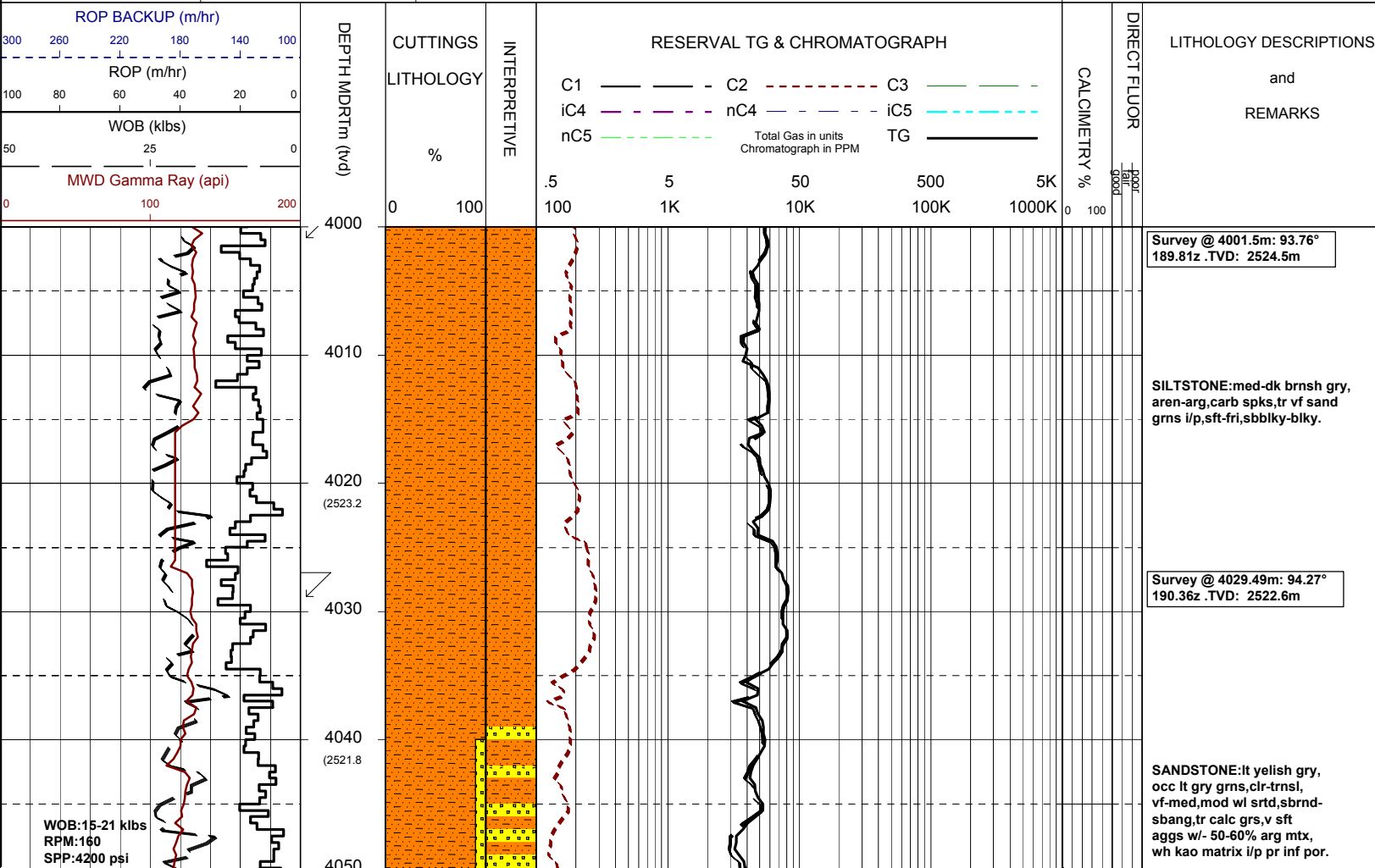


MASTERLOG LONGTOM-3H



GENERAL	POSITION	HOLE / CASING INFO	DATE / DEPTH	ENGINEERS
Country : AUSTRALIA Permit : VIC/P54 Field : LONGTOM Basin : GIPPSLAND Well Type : APPRAISAL Rig: OCEAN PATRIOT	Latitude : 38°05'34.63"S Longitude : 148°18'41.52"E UTM Co-ord X (m E): 615006 UTM Co-ord Y (m N): 5783059.3 RT to LAT (m): 21.5 RT to Sea Bed (m): 78.2	914mm(36") hole to: 111.8m 559mm(22") hole to: 1005m 241mm(9 1/2") hole to: m 762mm(30") Cond. to: 110.8m 406mm(16") Csg. to: 995.32m	Spud Date : 02-08-2006 Total Depth Date : XX-XX-2006 Total Depth (mMDRT): m True Vertical Depth (mTVDSS): m Log Scale : 1/ 500 Final Status : ??	T. N. KYAW A. DUNN D. ADDERLEY P. RADY

ABBREVIATIONS		LITHOLOGY LEGEND				ENGINEERING LEGEND	
MW Mud Weight	WOB Weight on Bit (klbs)	Claystone	Marl	Lithic Fragment	Cement	Shoe	DOLOMITE
FV Funnel Viscosity	RPM Rotations Per Min	Siltstone	Clay, Limestone	Foraminifera	Glauconite	Deviation survey	RFT
PV Plastic Viscosity	FLW Flow Rate (gpm)	Shale	Limestone	Fossils	Pyrite	DST	FIT
YP Yield Point	SPP Pump Pressure (psi)	Fine SST	Dolomite	Bryozoa	Iron Minerals	Test	Mud loss
Gel Gel Strength	RR Re-Run Bit	Medium SST	Coal	Sponges	Mica	Sidewall Core	Mud gain
WL Water Loss	TG Trip Gas	Coarse SST	Volcanic	Brachiopoda	Siderite	Core	
KCl Potassium Chloride	CG Connection Gas						
Cl Chlorides	BG Background Gas						
Incl Inclination	DGP Drilled Gas Peak						
Az Azimuth	MM Mud Motor						

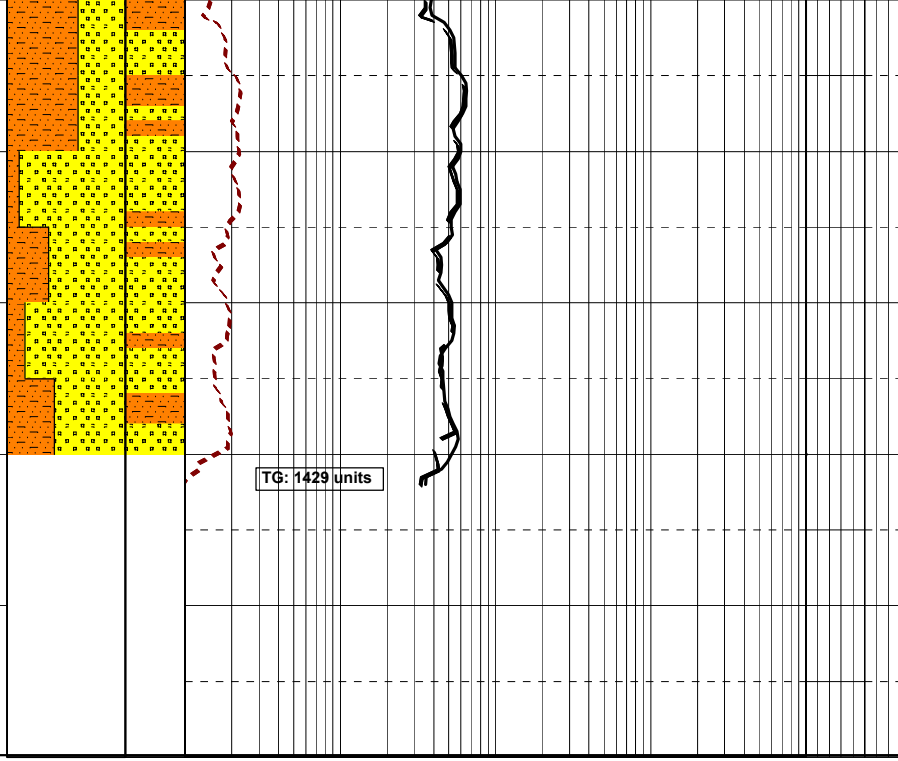


WOB: 15-21 klbs
RPM: 160
SPP: 4200 psi

FLW:665 gpm

26-08-06

1330
4060 (2520.2)
4070
4080 (2518.6)
4090
4100



TG: 1429 units

Survey @ 4059.30m: 94.50°
189.67z .TVD: 2520.3m

SANDSTONE:lt yellow gry,
occ lt gry grns,clr-trnsl,
vf-f,mod wl srtd,sbrnd-
sbang,tr calc grs,v sft
aggs w/- 50-60% arg mtx,
wh kao matrix i/p pr
inf por.

Bit #12: XXXXXXXXX
SIZE: 241mm (9.5")
JETS: XXX
MD IN:4080m OUT:xxxxm
TVD IN:2518.6m OUT:xxxxm
RUN:xxxxm HRS:xxx.x
COND: